

SATELLITE IMAGERY TO EMPOWER LOCAL GOVERNMENT

The rapid increase in processing powers has given rise to the advancement in satellite imagery, making it more affordable for governments and corporations as a useful planning and monitoring tool.

Now the fastest and most accurate means for governments and local authorities to minimize the negative impacts of development and industrialization on human activities is via satellite imagery due to its ability To give precise data to a wide area in the shortest possible time

Satellite imagery helps officials and authorities to discover and determine environmental, health, safety, resource development and emergency response in desired communities.



Satellite imagery provides a whole picture of the land that enables to identify human activities on the land and to do parcel mapping which supports local authorities.



Areas where you can use satellite imagery

- Feature extraction projects
- Infrastructuer planning / monitoring
- Cartographic projects
- Urban/rural Planing and Population tracking and GDP measurement
- Parcel Mapping / taxation
- Resiliency and emergency preparedness
- Asset Monitoring
- Law enforcement and illegal activity monitoring
- Research and development

Advantages

- Covers larger areas
- Saves time and resources
- Eliminates dependency on many in-person activities
- Expedites decision-making processes
- Manages systems smoothly and properly
- Easy to measure objects
- Can observe and monitor features over time and take necessary actions
- Can regulate laws properly
- Helps find new potential areas for developments



LAND USE PLANNING

Mapping land use and feature distribution over an area will support immensely in various ways. It eases decision-makers to take the right decision and plan projects with a clear picture and understanding of a specific area



Monitoring Ongoing Projects



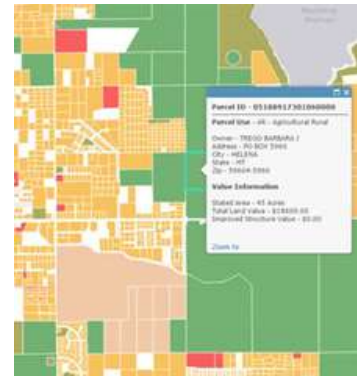
Examine the current situation, compliance and future steps by providing in-depth understanding

Monitoring Illegal Encroachments



Illegal encroachments over forest reservations, urban areas and other related reservation areas can be detected

Parcel Mapping



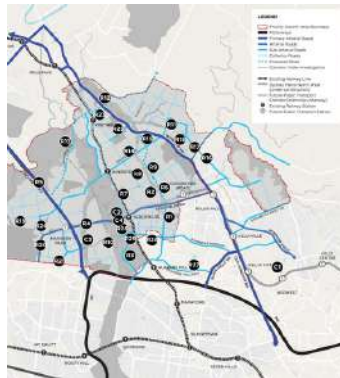
Helps to determine the accurate land size by tracking current land use and property types, assets etc. Enables measures to be taken to generate tax revenues

Development Projects Planning



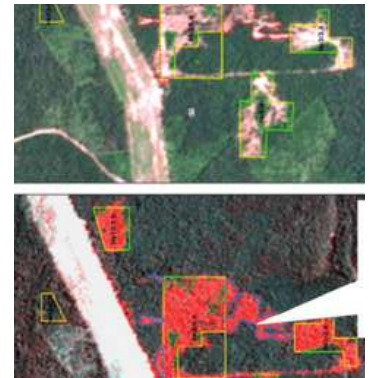
Provides a detailed image of the surface enabling to plan sustainable development projects.

Infrastructure Planning



Makes infrastructure planning easier and convenient while been cost-effective and time saving.

Law enforcement and Monitoring Illegal Activity



Allows authorities to identify hot spots including other trends and patterns enabling monitoring crime mapping and illegal activities such as illegal mining, terrorist activities, human trafficking, illegal construction etc.

- **Genesiis software provides a portfolio of Satellite Imagery products for local government-initiated medium to large-scale projects. Please feel free to call us on +94117765600 for a free consultation to map out your project needs**